



Zero Track Casambi

High-tech LED lighting system for interior architecture

Description

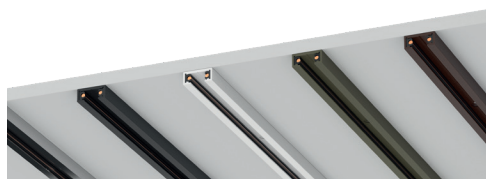
This new 24V system for surface mounted installation is characterized by its diminutive dimensions, providing a minimalist aesthetic which is perfect for many architectural spaces. The extruded aluminum track is available up to 2 meters long, and available in white, black, deep brown, bronze and chrome finishes. Zero Track is especially useful for residential applications, and concrete ceilings where recessed lighting cannot be installed. Easy to specify, easy to install and with a large variety of elegant spots, pendants, and area light fixtures designed by Jorge Herrera and Piero Lissoni.

Lamp

System Lamp Type	LED
Color Temperature	2700K, 3000K, 3500K* (See Notes)
Color Rendering	CRI90
Application	General Lighting



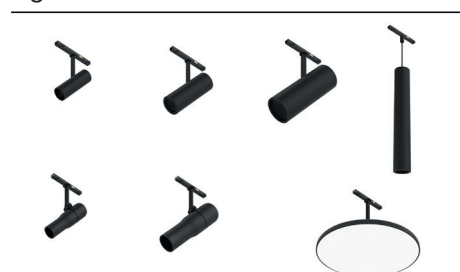
Surface Installation



Physical

Material	Aluminum
Ingress Protection Rating	IP20
Finishes	<div> <div>40 = White</div> <div>14 = Black</div> <div>06 = Chrome</div> <div>CZ = Bronze</div> <div>18 = Deep brown</div> </div>
Installation type	Surface
Environment	Indoor
Field cuttable	Yes

Light Modules



Certifications



Photometrics

For current IES files please visit
arch.flosusa.com

Warranty

2 years from date of sale.

Electrical & Control

Driver location	Remote
Driver Input Voltage	120V-277V
Driver Output Voltage	24V
Maximum Driver Wattage	96W
Control	CASAMBI



Zero Track Casambi

High-tech LED lighting system for interior architecture

Notes

Wattage per linear foot is dependent upon quantity and type of light modules used.

Contractor to supply wire from driver to luminaire. Drivers should be installed in a suitable electrical enclosure (by others), and an accessible location.

The surface mounted track is directly screwed to any surface. FLOS provides the mounting hardware.

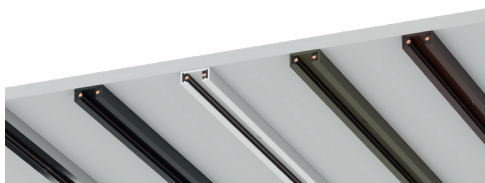
2 options in term of power supply:

- Remote power supply
- Surface mounted canopy directly connected to the track. Includes a Jbox cover plate. Track and Surface mounted canopy need to be completely aligned.

The maximum length that can be fed with a single 96W driver is 19'-6", however voltage drop may limit actual lengths to shorter runs. Consult factory for specific application assistance.

3500K and other CCTs are available but not cataloged. Consult factory.

Surface Installation



Light Modules



Certifications



Photometrics

For current IES files please visit
arch.flosusa.com

Warranty

2 years from date of sale.

How to Specify

A. Select and position corners

1. 90deg Corner - Connect sections on flat surfaces
2. Inner Corner - Connect sections wall/wall, wall/ceiling)

B. Fill lengths between corners with Linear Housings

Available section lengths are 3.3', and 6.7'. Profile can be easily cut on site to exact length and joined together with other track sections.

C. Drivers

Quantity of drivers determined by total wattage or light elements in section (total maximum possible per linear foot is 29W).

Maximum driver distance is 15'. Locate drivers nearby.

D. Select Spot heads

Individual Spots are Find Me zero, Find Me 1, Find Me 1 Suspension, Atom 90, Atom 120 and Atom 200.

Zero Track Casambi

High-tech LED lighting system for interior architecture

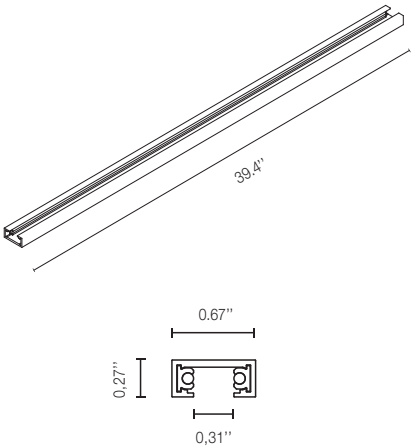
Profiles

39.4" [1 m] Profile

Indoor Track for surface mounted installations (ceiling or wall). To be fixed with specific screw plugs that come with the track. All accessories need to be order separately.

Part Number:

- 06.2500.40
- 06.2500.06
- 06.2500.14
- 06.2500.CZ
- 06.2500.18

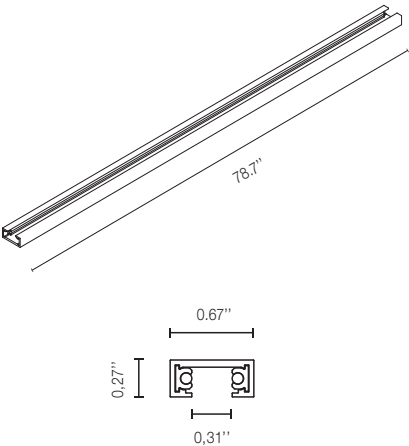


78.7" [2 m] Profile

Indoor Track for surface mounted installations (ceiling or wall). To be fixed with specific screw plugs that come with the track. All accessories need to be order separately.

Part Number:

- 06.2501.40
- 06.2501.06
- 06.2501.14
- 06.2501.CZ
- 06.2501.18

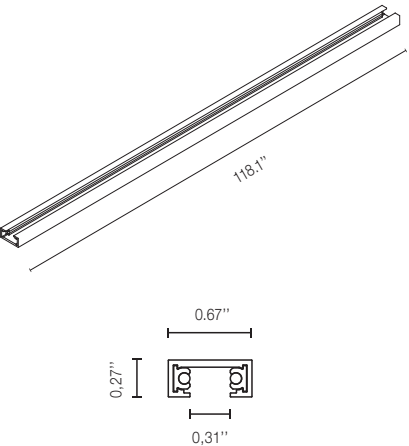


118.1" [3 m] Profile

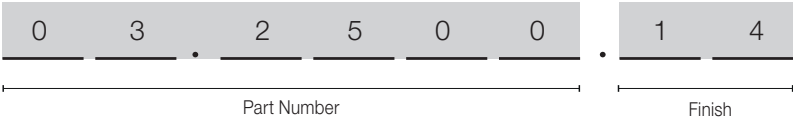
Indoor Track for surface mounted installations (ceiling or wall). To be fixed with specific screw plugs that come with the track. All accessories need to be order separately.

Part Number:

- 06.2502.40
- 06.2502.06
- 06.2502.14
- 06.2502.CZ
- 06.2502.18



How to specify



Zero Track Casambi

High-tech LED lighting system for interior architecture

Connectors

Feed unit for remote power supply unit

Power cable inserting is possible both from the top and the side.

Part Number:

- 06.2540.40
- 06.2540.14
- 06.2540.CZ
- 06.2540.18

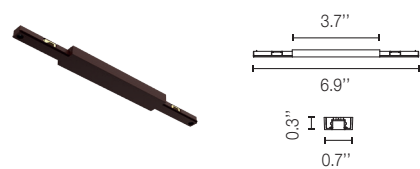


Feed intermediate connector.

Upper feeding cable entry.

Part Number:

- 06.2541.40
- 06.2541.14
- 06.2541.CZ
- 06.2541.18



Intermediate connector

Part Number:

- 06.2506.40
- 06.2506.14



Accessories

End Cap Kit

Part Number:

- 06.2509.40
- 06.2509.14
- 06.2509.CZ
- 06.2509.18



Stopper

For fixing luminaires in vertical track installations.

Part Number:

- 08.0630.40
- 08.0630.14



Zero Track Casambi

High-tech LED lighting system for interior architecture

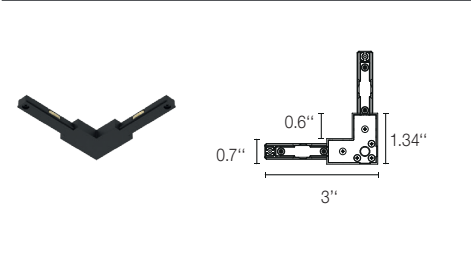
Corners

Flat Corner 90°

Can be powered. It has a rear space for the supply connection.

Part Number:

- 06.2542.40
- 06.2542.14
- 06.2542.CZ
- 06.2542.18

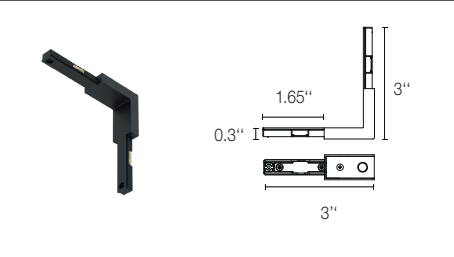


Ceiling/wall - wall/wall inner corner

Can be powered. It has two spaces for the supply connection located on each side at the rear.

Part Number:

- 06.2543.40
- 06.2543.14
- 06.2543.CZ
- 06.2543.18

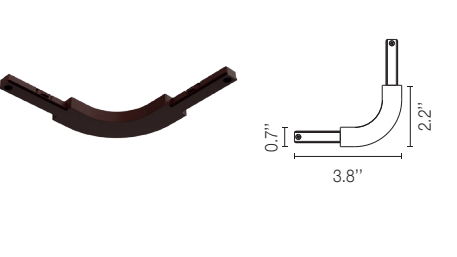


Interior ceiling/ceiling-wall/wall curve.

Can be powered via connections on the back.

Part Number:

- 06.2544.40
- 06.2544.14
- 06.2544.CZ
- 06.2544.18

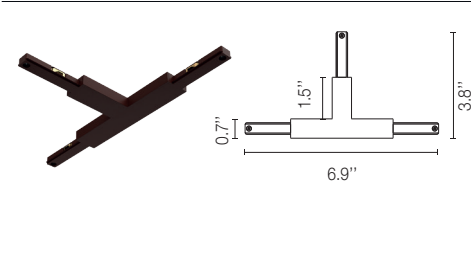


T-shaped connector

Can be powered via connections on the back.

Part Number:

- 06.2545.40
- 06.2545.14
- 06.2545.CZ
- 06.2545.18

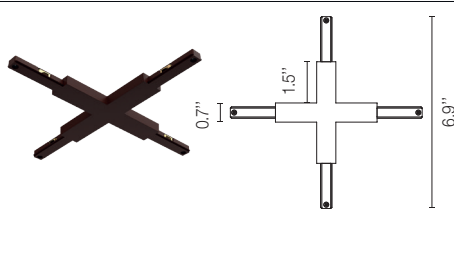


Cross-shaped connector

Can be powered via connections on the back.

Part Number:

- 06.2546.40
- 06.2546.14
- 06.2546.CZ
- 06.2546.18



Zero Track Casambi

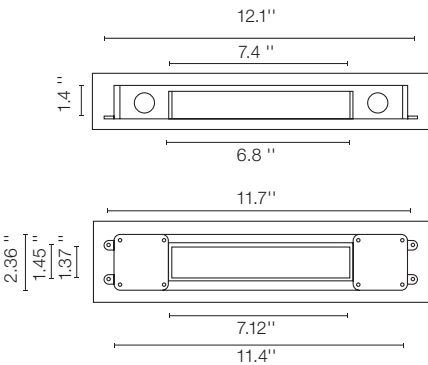
High-tech LED lighting system for interior architecture

Required Drivers

LED Driver, 24VDC, 96W, Non-Dimming,
120-277V

Part Number:

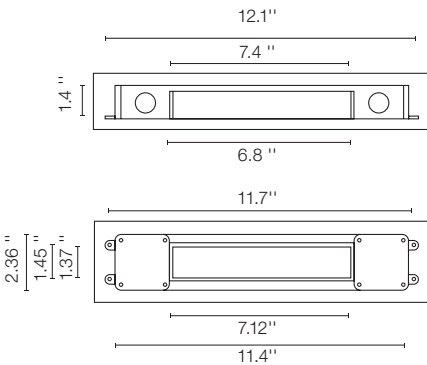
LEDSB96W24V-NDM-D1



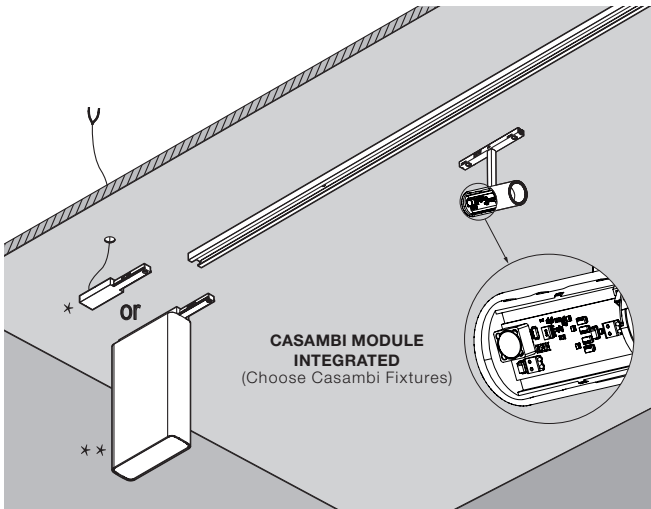
LED Driver, 24VDC, 60W, Non-Dimming,
120-277V

Part Number:

LEDSB60W24V-NDM-D1



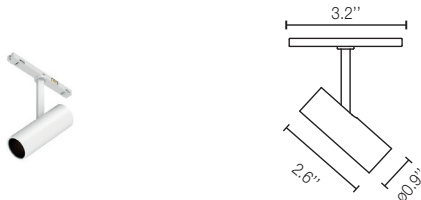
Individual Control Casambi Bluetooth



Zero Track Casambi

High-tech LED lighting system for interior architecture

Find Me 0



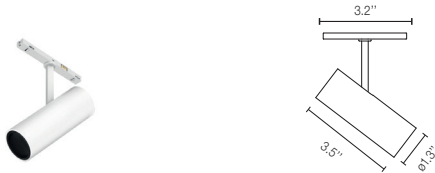
CCT *	CRI	Initial Lumens	Delivered Lumens	Watts	Beam Spread	Part Number	Finish	Photometric
2700	90	300	169	3.5W	15°	09.3901	40 = White 06 = Chrome 14 = Black CZ = Bronze 18 = Deep brown	<p>Beam Angle: 15° h(m) E(lx) D(m) 1 1303 0.26 2 326 0.52 3 145 0.77 4 81 1.03 5 52 1.29 Luminous flux luminaire 169 lm</p>
3000	90	325	183	3.5W	15°	09.3900	40 = White 06 = Chrome 14 = Black CZ = Bronze 18 = Deep brown	<p>Beam Angle: 15° h(m) E(lx) D(m) 1 1412 0.26 2 353 0.52 3 157 0.77 4 88 1.03 5 56 1.29 Luminous flux luminaire 183 lm</p>
2700	90	300	163	3.5W	20°	09.3903	40 = White 06 = Chrome 14 = Black CZ = Bronze 18 = Deep brown	<p>Beam Angle: 20° h(m) E(lx) D(m) 1 1059 0.36 2 265 0.72 3 118 1.08 4 66 1.44 5 42 1.80 Luminous flux luminaire 163 lm</p>
3000	90	325	177	3.5W	20°	09.3902	40 = White 06 = Chrome 14 = Black CZ = Bronze 18 = Deep brown	<p>Beam Angle: 20° h(m) E(lx) D(m) 1 1151 0.36 2 288 0.72 3 128 1.08 4 72 1.44 5 46 1.80 Luminous flux luminaire 177 lm</p>

* Consult factory for other available CCT

Zero Track Casambi

High-tech LED lighting system for interior architecture

Find Me 1



CCT *	CRI	Initial Lumens	Delivered Lumens	Watts	Beam Spread	Part Number	Finish	Photometric
2700	90	450	309	5.5W	14°	09.3912	40 = White 06 = Chrome 14 = Black CZ = Bronze 18 = Deep brown	<p>Beam Angle: 14° h(m) E(lx) D(m) 1 4168 0.24 2 1042 0.48 3 463 0.72 4 261 0.95 5 167 1.19 Luminous flux luminaire 309 lm</p>
3000	90	485	314	5.5W	14°	09.3910	40 = White 06 = Chrome 14 = Black CZ = Bronze 18 = Deep brown	<p>Beam Angle: 14° h(m) E(lx) D(m) 1 4193 0.24 2 1048 0.49 3 466 0.73 4 262 0.97 5 168 1.21 Luminous flux luminaire 314 lm</p>
2700	90	450	186	5.5W	20°	09.3913	40 = White 06 = Chrome 14 = Black CZ = Bronze 18 = Deep brown	<p>Beam Angle: 20° h(m) E(lx) D(m) 1 1238 0.35 2 310 0.70 3 138 1.06 4 77 1.41 5 50 1.76 Luminous flux luminaire 186 lm</p>
3000	90	485	193	5.5W	20°	09.3911	40 = White 06 = Chrome 14 = Black CZ = Bronze 18 = Deep brown	<p>Beam Angle: 20° h(m) E(lx) D(m) 1 1285 0.35 2 321 0.70 3 143 1.06 4 80 1.41 5 51 1.76 Luminous flux luminaire 193 lm</p>

* Consult factory for other available CCT

Zero Track Casambi

High-tech LED lighting system for interior architecture

Find Me 2



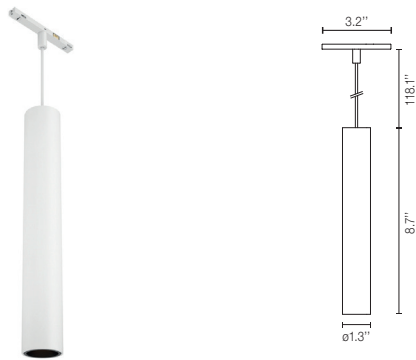
CCT *	CRI	Initial Lumens	Delivered Lumens	Watts	Beam Spread	Part Number	Finish	Photometric
2700	90	650	479	10.5W	10°	09.3962	40 = White 06 = Chrome 14 = Black CZ = Bronze 18 = Deep brown	<p>Beam Angle: 10° h(m) E(lx) D(m) 1 9244 0.18 2 2311 0.35 3 1027 0.53 4 578 0.70 5 370 0.88</p> <p>Luminous flux luminaire 479 lm</p>
3000	90	700	531	10.5W	10°	09.3960	40 = White 06 = Chrome 14 = Black CZ = Bronze 18 = Deep brown	<p>Beam Angle: 10° h(m) E(lx) D(m) 1 10249 0.18 2 2562 0.35 3 1139 0.53 4 641 0.70 5 410 0.88</p> <p>Luminous flux luminaire 531 lm</p>
2700	90	650	441	10.5W	19°	09.3963	40 = White 06 = Chrome 14 = Black CZ = Bronze 18 = Deep brown	<p>Beam Angle: 19° h(m) E(lx) D(m) 1 1991 0.34 2 498 0.67 3 221 1.01 4 124 1.34 5 80 1.68</p> <p>Luminous flux luminaire 441 lm</p>
3000	90	700	489	10.5W	19°	09.396 1	40 = White 06 = Chrome 14 = Black CZ = Bronze 18 = Deep brown	<p>Beam Angle: 19° h(m) E(lx) D(m) 1 2208 0.34 2 552 0.67 3 245 1.01 4 138 1.34 5 88 1.68</p> <p>Luminous flux luminaire 489 lm</p>
2700	90	650	364	10.5W	32°	09.3965	40 = White 06 = Chrome 14 = Black CZ = Bronze 18 = Deep brown	<p>Beam Angle: 32° h(m) E(lx) D(m) 1 722 0.57 2 180 1.15 3 80 1.72 4 45 2.29 5 29 2.87</p> <p>Luminous flux luminaire 364 lm</p>
3000	90	700	404	10.5W	32°	09.3964	40 = White 06 = Chrome 14 = Black CZ = Bronze 18 = Deep brown	<p>Beam Angle: 32° h(m) E(lx) D(m) 1 800 0.57 2 200 1.15 3 89 1.72 4 50 2.29 5 32 2.87</p> <p>Luminous flux luminaire 404 lm</p>

* Consult factory for other available CCT

Zero Track Casambi

High-tech LED lighting system for interior architecture

Find Me 1 Suspension



CCT *	CRI	Initial Lumens	Delivered Lumens	Watts	Beam Spread	Part Number	Finish	Photometric
2700	90	450	309	5.5W	14°	09.3922	40 = White 06 = Chrome 14 = Black CZ = Bronze 18 = Deep brown	<p>Beam Angle: 14° h(m) E(lx) D(m) 1 4168 0.24 2 1042 0.48 3 463 0.72 4 261 0.95 5 167 1.19 Luminous flux luminaire 309 lm</p>
3000	90	485	314	5.5W	14°	09.3920	40 = White 06 = Chrome 14 = Black CZ = Bronze 18 = Deep brown	<p>Beam Angle: 14° h(m) E(lx) D(m) 1 4193 0.24 2 1048 0.49 3 466 0.73 4 262 0.97 5 168 1.21 Luminous flux luminaire 314 lm</p>
2700	90	450	186	5.5W	20°	09.3923	40 = White 06 = Chrome 14 = Black CZ = Bronze 18 = Deep brown	<p>Beam Angle: 20° h(m) E(lx) D(m) 1 1238 0.35 2 310 0.70 3 138 1.06 4 77 1.41 5 50 1.76 Luminous flux luminaire 186 lm</p>
3000	90	485	193	5.5W	20°	09.3921	40 = White 06 = Chrome 14 = Black CZ = Bronze 18 = Deep brown	<p>Beam Angle: 20° h(m) E(lx) D(m) 1 1285 0.35 2 321 0.70 3 143 1.06 4 80 1.41 5 51 1.76 Luminous flux luminaire 193 lm</p>

* Consult factory for other available CCT



Zero Track Casambi

High-tech LED lighting system for interior architecture

Atom 90



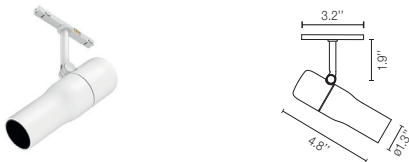
CCT *	CRI	Initial Lumens	Delivered Lumens	Watts	Beam Spread	Part Number	Finish	Photometric
2700	90	450	224	5.5W	14°	09.3931	40 = White 05A = Chrome 14 = Black CZ = Bronze 18 = Deep brown	<p>Beam Angle: 14° h(m) E(lx) D(m) 1 2558 0.25 2 640 0.51 3 284 0.76 4 160 1.02 5 102 1.27 Luminous flux luminaire 224 lm</p>
3000	90	485	247	5.5W	14°	09.3930	40 = White 05A = Chrome 14 = Black CZ = Bronze 18 = Deep brown	<p>Beam Angle: 14° h(m) E(lx) D(m) 1 2832 0.25 2 708 0.51 3 315 0.76 4 177 1.02 5 113 1.27 Luminous flux luminaire 247 lm</p>
2700	90	450	217	5.5W	21°	09.3933	40 = White 05A = Chrome 14 = Black CZ = Bronze 18 = Deep brown	<p>Beam Angle: 21° h(m) E(lx) D(m) 1 1362 0.37 2 341 0.73 3 151 1.10 4 85 1.47 5 54 1.84 Luminous flux luminaire 217 lm</p>
3000	90	485	240	5.5W	21°	09.3932	40 = White 05A = Chrome 14 = Black CZ = Bronze 18 = Deep brown	<p>Beam Angle: 21° h(m) E(lx) D(m) 1 1508 0.37 2 377 0.73 3 168 1.10 4 94 1.47 5 60 1.84 Luminous flux luminaire 240 lm</p>

* Consult factory for other available CCT

Zero Track Casambi

High-tech LED lighting system for interior architecture

Atom 120



CCT *	CRI	Initial Lumens	Delivered Lumens	Watts	Beam Spread	Part Number	Finish	Photometric
2700	90	635	433	8W	14°	09.3941	40 = White 05A = Chrome 14 = Black CZ = Bronze 18 = Deep brown	<p>Beam Angle: 14° h(m) E(lx) D(m) 1 5843 0.24 2 1461 0.48 3 649 0.72 4 365 0.95 5 234 1.19 Luminous flux luminaire 433 lm</p>
3000	90	680	440	8W	14°	09.3940	40 = White 05A = Chrome 14 = Black CZ = Bronze 18 = Deep brown	<p>Beam Angle: 14° h(m) E(lx) D(m) 1 5878 0.24 2 1469 0.49 3 653 0.73 4 367 0.97 5 235 1.21 Luminous flux luminaire 440 lm</p>
2700	90	635	364	8W	20°	09.3943	40 = White 05A = Chrome 14 = Black CZ = Bronze 18 = Deep brown	<p>Beam Angle: 20° h(m) E(lx) D(m) 1 2557 0.35 2 639 0.70 3 284 1.06 4 160 1.41 5 102 1.76 Luminous flux luminaire 364 lm</p>
3000	90	680	373	8W	20°	09.3942	40 = White 05A = Chrome 14 = Black CZ = Bronze 18 = Deep brown	<p>Beam Angle: 20° h(m) E(lx) D(m) 1 2624 0.35 2 656 0.70 3 292 1.06 4 164 1.41 5 105 1.76 Luminous flux luminaire 373 lm</p>

* Consult factory for other available CCT



Zero Track Casambi

High-tech LED lighting system for interior architecture

Atom 200



CCT *	CRI	Initial Lumens	Delivered Lumens	Watts	Beam Spread	Part Number	Finish	Photometric
2700	90	1050	395	10.5W	110°	09.3951	40 = White 05A = Chrome 14 = Black CZ = Bronze 18 = Deep brown	<p>Luminous flux luminaire 395 lm</p>
3000	90	1150	424	10.5W	110°	09.3950	40 = White 05A = Chrome 14 = Black CZ = Bronze 18 = Deep brown	<p>Luminous flux luminaire 424 lm</p>

* Consult factory for other available CCT